

KORBER WAREHOUSE MANAGEMENT SYSTEM

End-to-end Warehouse Management Solution Enables Small and Mid-Sized Enterprises to Drive Rapid, Out-of-Box Warehouse Optimization and Efficiency

DESIGNED TO EMBRACE THE NEEDS OF TODAY AND TOMORROW

Out-of-box supply chain execution tools for unmatched flexibility and adaptability proved, seamless integration with most ERP-s – Microsoft, Sage, NetSuite, SAP and more. Comprehensive security and services infrastructure that is extendable, responsive HTML5 user experience with specific layout guides for desktop functions, tablets and smartphones, open web service API. Powerful workflow adaptability layer mobilizing your workforce.

Korber Warehouse Management System is a leading end-to-end warehouse management suite enabling executives, managers and warehouse personnel to access real-time supply chain analytics and take proactive or corrective action anywhere, anytime.

By accessing full WMS functionality from any browser, desktop, tablet or smartphone, your workforce is empowered to maximize business results through increased mobility, analytics and information exchange.

With highly accessible and actionable warehouse management suite, you will be able to respond to evolving market pressures and deliver on ever shrinking time in delivery windows. In addition, operations executives and warehouse managers are enabled through a supply chain control tower that acts as single command center for visibility, decision-making and action, based on real-time data.

ONE SUPPLY CHAIN EXECUTION PLATFORM, ANYWHERE AND ANYTIME

Korber Warehouse System leverages a platform that utilizes the responsive capabilities of HTML5 to deliver an intuitive, mobile friendly user experience across the entire Korber suite of solutions. This common UI makes training and on-boarding users faster and easier and simplifies the work of your IT department by having to concentrate on one technological infrastructure across your supply chain.

Unlike other visibility products that offer only reporting, Korber WMS empowers you to plan and manage all inventory, processes and people directly from a web browser, whether that be on your desktop, your tablet or your phone.

The platform can also advise mobile employees of critical operations events. In addition, eLearning and event management tools ease on-boarding and promote proactive business management.

INTEGRATED, FLEXIBLE PICKING WORKFLOWS

Gain faster and accurate cycle counts and improve order through-put capacity by increasing lines per hour picked/packed with fewer resources.

Wave / Cluster Picking

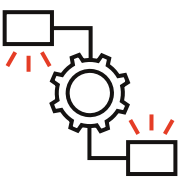
Zone Picking

Batch Picking

Replenish & Forward Pick

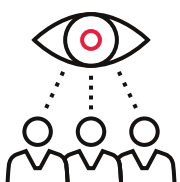
eFulfillment

ACHIEVE STREAMLINED OPERATIONAL EXCELLENCE



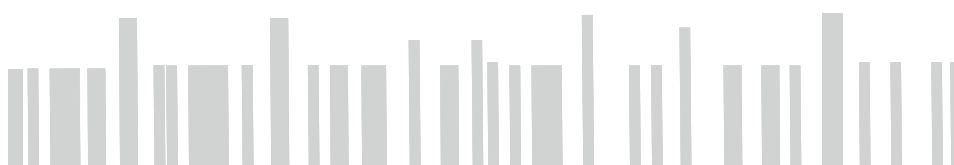
Drive Increased Productivity

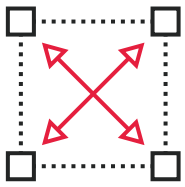
Utilize advanced functionality to increase inventory turn and provide detailed worker accountability, resulting in heightened productivity and maximized efficiency. Optimized warehouse processes reduce picking time and product touches allowing you to seize cross-docking opportunities. It also minimizes travel paths with slotting / re-slotting functionality, optimizes picking execution with user-configured algorithm, and intelligently directs put-away to the appropriate bins based on product handling characteristics. Furthermore, our solution virtually eliminates the need for non-value added actions such as manual checking and shipment audits.



Avoid Costly Errors with up to 99%+ Inventory Accuracy.

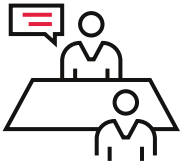
Through robust cycle counting capabilities, real-time information confirmation and verification, our solution gives your employees and their managers immediate feedback on work accuracy. An accurate system ensures workers are not looking for missing inventory or overloading any given situation.





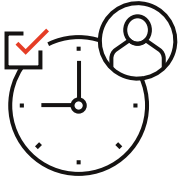
Optimizing Warehouse Space

Korber Warehouse System provides directed stock rotation, intelligent picking directives, automatic consolidation, and cross-docking to maximize the use of valuable warehouse space. The system also directs and optimizes put-away based on accurate, real-time information about the status of bin utilization.



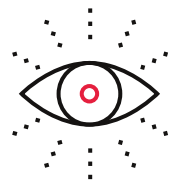
Exceed Customer Expectations

You will be empowered to consistently deliver on customer promises with the ability to reduce cycle times, stock-outs and backorders, improve order accuracy and on-time shipments and offer unique service.



Boost On-Time and Complete Shipments

The accurate order picking functionality of Korber Warehouse System allows you to deliver complete orders on time. Increased fill rates and decreased cycle times enable you to avoid costly shipping delays and backorders that jeopardize valuable customer relationship. In addition, overall process efficiency decreases cycle time, resulting in more on-time shipments.

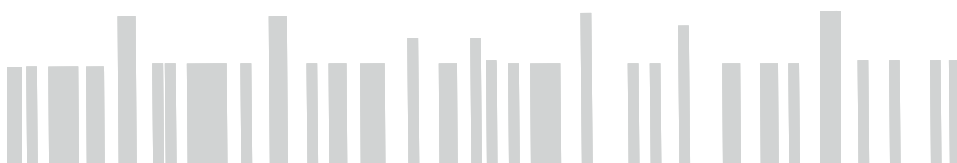


Reduced Shrinkage and Spoilage

Our solution facilitates real-time monitoring and enforces FIFO (first-in, first-out) rotation to reduce spoilage. In addition, high levels of worker accountability empower you to detect shrinkage problems.

THE KORBER DIFFERENCE

Korber WMS serves a variety of distribution and manufacturing industries from 3PL operators, food and beverage, automotive, aerospace, pharmaceutical and apparel. Flexible and adaptable software is a requirement for any company with a distribution center that needs to scale for growth.



Companies that sell products to major retailers prioritize vendor compliance above all else. Complex warehouse processes resulting from selling to multiple channels in pallet, case, and unit quantities by small parcel, LTL and full trailer demand configurable flexible software. Our relationship enables the distributor to pivot and meet changing process needs. Add to the mix a growing need to accommodate large volumes of drop-shipments that require multiple, customer-specific packing slips, routing the EDI requirement and the right partner is critical to enable process optimization while maintain excellent customer service.

“When everything takes place electronically, we do not have to spend time on manual procedures that can delay the process. With the help from Korber WMS, we are in much better control of our business.”

Mads Hvelplund, Development Manager, DT Group

Unmatched Flexibility and Adaptability

Whether you are seeking an adaptable solution build to fit your unique requirement or one that can be quickly configured and implemented. Korber Warehouse System arms your operations with the out-of-the-box tools you need to achieve efficiencies and enable scalable growth.

Low Total Cost of Ownership

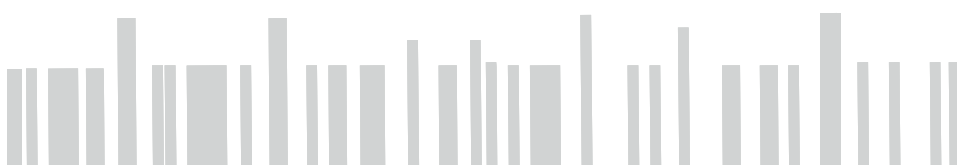
Korber comprehensive warehouse suite controls and optimizes the flow of inventory thought the extended supply chain, from suppliers though consumption. Korber combines the functionality and flexibility you require to efficiently meet customer expectations, reduce costs and achieve a low cost of ownership. That generates a fast ROI, often in less than 12 months.

Satisfying High-Volume Internet Retail Requirements

Internet retailers require flexible processes that enable them to flex capacity for weekly and peak volume fluctuations. Optimal processes for monday shipments may not be the same on friday and are certainly different from peak or holiday volumes. Korber Warehouse System enables optimized business processes for fluctuating demand, a common challenge of eFulfillment, with help of small parcel shipping integration and warehouse automation (i.e. conveyor and put-walls)

Seamless ERP Integrations

Proven integrations with major ERP systems decrease implementation time and cost though a repeatable implementation process while minimizing time to value. We consistently maintain deep technical expertise with Microsoft Dynamics, Sage, NetSuite, SAP Business One, Infor and more, as well as upgrade and test our integrations prior to our customer upgrading to new version of existing ERP.



BROAD SOLUTION SET CAPABILITIES

Source all your supply chain needs with an end-to-end solution from a single supplier and eliminate multi-vendor integrations. The Korber Warehouse System solution suite contains powerful transportation management, small parcel shipping yard and dock, labour management, actionable analytics and EDI integration to further modernize your distribution operation and set you up for sustainable success.

GAIN ASEAMLESS OUTBOUND ORDER PROCESS WITH INTEGRATED SHIPPING

With seamlessly integrated shipping functionality, you will eliminate fixed packing stations and shipment paperwork to reduce costly manual errors and increase shipment reliability. By leveraging a powerful multicarrier rating engine, it will also allow you to automatically select the cheapest carrier, mode, and service level that meets your delivery time frames. Reduce your shipping costs, track every shipment and maintain valuable key performance metrics all while gaining accurate shipping compliance and superior customer service.

EMPOWER DECISION-MAKING WITH ACTIONABLE ANALYTICS

Create, manage and view KPI dashboards and analyze ad-hoc business intelligence using pivots, drill down, charts, and graphs. With this module, you can measure your operations performance and the success of your business with simple, digestible KPI-s that measure people, processes and inventory. It provides real-time visibility into your entire extended enterprise. You will be able to view historical trends and real time metrics and improve your decision-making.

AUTOMATED INSPECTION PROCESSES WITH QUALITY ASSURANCE

Automate your inspection processes for a diverse set of tasks, including the inbound receipt of goods, outbound sales orders, material handling equipment, tractors / trailers, physical plant equipment and specialized inventory. It allows the user to quickly and easily capture images at any point of the inspection process. This HTML5 based solution can be accessed on any device with an internet connection and allows you to reduce the cost of dealing with compliance and regulatory requirements. It will allow you to improve the performance of suppliers and product quality to minimize product loss, rejects, chargeback and recalls.

ON-DEMAND, PIXEL-PERFECT REPORTING CAPABILITIES

Reports module allows the administrator to manage and configure reports and allows both users and administrators to run an ad-hoc report. It can print hard copy documents generated by the Korber Warehouse System suite, including OTR documents, gate passes and much more.

COST-EFFECTIVELY SCHEDULE YOUR RESOURCES

The web centric design allows users to utilize a setup of tools and quickly and easily book an appointment based on customizable business rules for any type of resource (e.g. dock doors, manufacturing machinery, material handling equipment, etc.). External carriers and vendors can log into the portal to schedule a date, time and dock door for deliveries or outbound orders based on parameters set by warehouse operations.

Korber WMS BY NUMBERS

4.200+ global customers

30+ experience of supply chain management

Localized products implementation in 66 countries.



CROATIA

R .Cimermana 64a, Zagreb
Tel: +385 1 6593 730
E-mail: info@spica.hr
Web: www.spica.hr

SLOVENIA

Pot k Sejmišču 33, Ljubljana
Tel: +386 1 56 80 800
E-mail: info@spica.com
Web: www.spica.si

SERBIA

Bul. Mihaila Pupina 165v, Beograd
Tel: +381 11 222 5070
E-mail: info@spica.rs
Web: www.spica.rs

BOSNIA & HERZEGOVINA

Pljačina 6, Sarajevo
Tel: +387 33 765 285
E-mail: ba_info@spica.com
Web: www.spica.ba

NORTH MACEDONIA

III. Makedonska brigada bb, Skopje
Tel: +389 2 2465 631
E-mail: info@spica.com.mk
Web: www.spica.com.mk

MONTENEGRO

Moskovska 77, Podgorica
Tel: +382 6717 25 59
E-mail: mido.andjelic@spica.com
Web: www.spica.com