

LATEST NEWS:

UCC-Compliant Products Enable Implementation Cost-Savings

EAN.UCC Standards Certified

The Uniform Code Council, Inc.® (UCC®) has announced that the INTEGRA™ 9500 has passed certification tests in selected symbol categories for bar code verification of the EAN.UCC System Standards.

As of January, 2005, the INTEGRA™ 9500 is the **ONLY** barcode verification system available on the market certified for EAN.UCC System Standards.

What is the INTEGRA™ 9500?

The INTEGRA™ 9500 bar code quality station is an all in one bar code verifier with analytical software that is extremely easy to operate. Just place the label on the viewing platform and it is graded. No button to press - Very user friendly.

The INTEGRA™ 9500 will automatically identify the correct bar code symbology as well as the correct aperture setting. The results are easily read on the built-in LCD monitor.

INTEGRA™ 9500 Unique Features

The INTEGRA™ 9500 inspects all nine of the ISO (ANSI) parameters **PLUS** added features of determining Blemishes, and Human Readable Validation.

The analysis is color coded to show exactly where the problem is with the bar code. Sections of the bar code can be analyzed to better determine how to solve the problem. Reference to an on-line help screen will aid in this analysis.

High-resolution inspection of the bar code is possible due to the use of very high resolution cameras (1.3 mega-pixels to 2.1 mega-pixels). This allows reading (and analyzing) up to every two thousandth of an inch (.05mm) of the bar code height.

Exceeds the ten-scan average required by ISO.



Unique Features Continued:

Camera technology allows more detailed analysis of the bar code, and it makes reading of small and truncated codes possible, accurate, and very easy.

Multiple codes, including any combination of linear, matrix and stacked (PDF-417, Micro PDF, Data Matrix, RSS, Composite Codes, among others) can be verified on one label within the field of view, by using the Optional Multi-Code Feature.

Accuracy, Repeatability and Reliability

Accuracy and repeatability are paramount in bar code verification. The INTEGRA™ 9500 is the **most accurate verifier** on the market today with the highest degree of repeatability. The operator is not involved in the scanning process. No wand to hold or move, no angle to maintain, and no buttons to push that can affect the overall grade results.

The INTEGRA™ 9500 Bar Code Station is the **most reliable system** on the market. There are no moving parts to wear out, no laser diode to burn out.

The INTEGRA™ 9500 is supplied with a NIST traceable conformance standard test card provided by the UCC to ensure that it is always within a known calibration standard.

PC System

INTEGRA® 9500 Software
Windows XP Professional
Industrial Chassis
Intel Celeron 2.4 Ghz
512 MB RAM
40 GB HDD
CD Rom Drive
Nema 4 sealed 104 key board
SQL Compliant Database

Monitor

12.1" LCD Monitor (built in)
800 x 600 resolution
12 VDC 3.75 A 45 W

Camera

Monochrome Camera
1.3 mega-pixels to 2.1 mega-pixels

Light Source

CCFL light / N6
Narrow band pass interference filter
12 vdc @ 1.6 A

Inputs / Outputs

USB 2.0 port (3)
Serial Port
VGA Port
10/100 MB. Lan (Ethernet)

Main Power Supply

Internal fuse (5A)
350 watt ATX Power Supply
50/60 Hz 90 to 230 VAC
UL Approved
CE Approved

Size of Field of View

From: 2.5" x 2" (63mm x 50mm)

To: 6.25" x 5" (126mm x 100mm)

Dependant on camera / lens configuration.

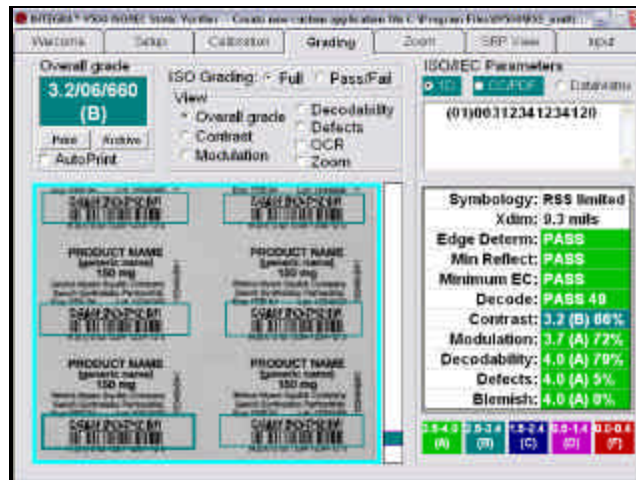
Scan Resolution

All codes are scanned every .05mm (.002")

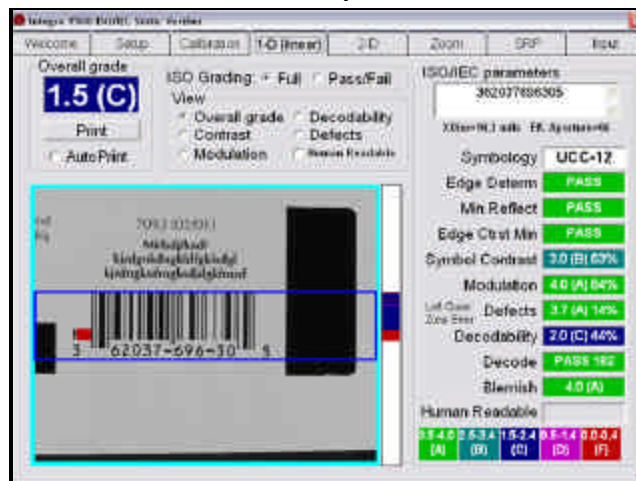
Contact Information

Label Vision Systems, Inc.
101 Auburn Court
Peachtree City, GA 30269
toll free: 800.432.9430
voice: 770.487.6414
fax: 770.487.0860
URL: www.lvs-inc.com
Email: info@lvs-inc.com

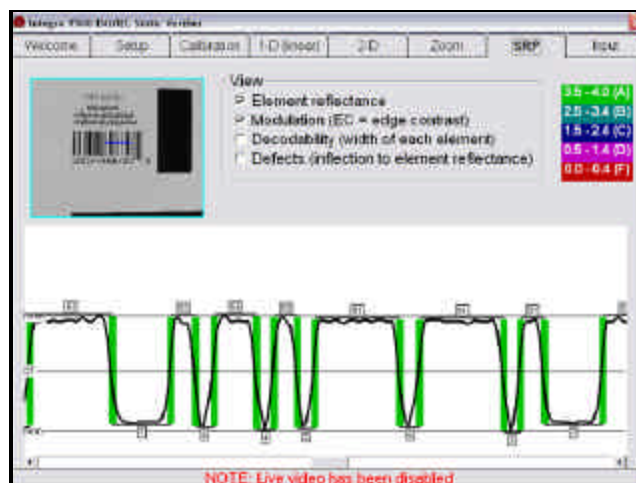
INTEGRA® 9500 Multi-Code (optional feature)



INTEGRA® 9500 Operate Screen



INTEGRA® 9500 Scan Reflectance Profile



Warranty

The INTEGRA™ 9500 comes with a two year return to base parts and labor warranty. Free software upgrades are available to registered users of the INTEGRA™ 9500.

ISO/IEC/ANSI Verification

Edge Determination
Minimum Reflectance
Min Edge Contrast
Decode
Symbol Contrast
Modulation
Decodability
Defects (spots/voids)
Quiet Zone Check
Blemish
Verification of Human Readable

Supported Symbologies

Code 39
ITF (1 2 of 5)
UCC/EAN-128
Code 128
Codabar
UPC-A
Code 93
Pharmacode
MSI Plessey
UPC-E
DataMatrix (ECC-200)
EAN-8
EAN-13
RSS-14
RSS Stacked
RSS Limited
PDF 417
MicroPDF 417
Composite Code CC-A
Composite Code CC-B
Composite Code CC-C

Supported Standards

SUPPORTED CONFORMANCE STANDARDS:
ISO/IEC 15415:2000(E)
ISO/IEC 15416:2000(E)
ISO/IEC 15426-1:2000(E)
ISO/IEC 15426-2:2004(E)

SUPPORTED APPLICATION STANDARDS:
ISO/IEC
GENERAL EAN.UCC (GEN SPECS)

EAN/UCC CERTIFICATION CATEGORIES:

EAN/UPC
ITF-14
UCC/EAN-128
EAN/UPC & extended codes
UCC/EAN with Supplementals
RSS-14
Data Matrix for Healthcare
EAN/UPC with CC
UCC/EAN-128 with CC
RSS-14 with CC
DataMatrix (ECC 200)

